

**Weekends**

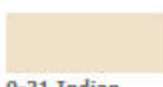
Escaping for the weekend is one of America's favorite summer traditions. Unwinding while sitting in the warm summer sun sipping fresh squeezed lemonade, spending time with friends & family, and enjoying happy times. Stressful lives and the need for rejuvenation and quality time are reflected in this palette.



4-9 Corinthian



25-14 Monsoon



9-31 Indian Ivory



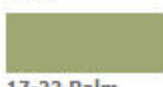
20-21 Balsam Green



24-29 Argent



13-7 Golden Fleece



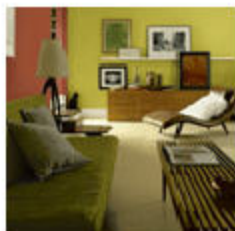
17-22 Palm Green



11-29 River Sand

**Metro Nights**

The runway struts directly into the home with day glow brights and saturated gem tones. Nightlife and urban lifestyle are apparent influences in this sophisticated and fashionable palette. One may even consider this reminiscent of the spirited cocktail hour from the glamorous 1930's.



30-14 Tulip Purple



23-23 Portland Blue



15-23 Sea Weed



31-17 Black Orchid

**Youth**

**Madras**

The world continues to feel smaller as cultures fuse harmoniously to create a unified mosaic. The definitive lines of each demographic are blurring in result of the acceptance of multi-cultural influences. This palette echoes the synergy of styles to create a globally eclectic feel.



10-20 Camel



2-14 Cerise Delight



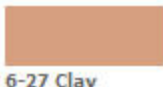
23-10 Nanking Blue



10-24 Mink



17-21 Pampas



6-27 Clay Powder



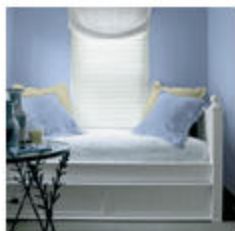
2-19 Fedora



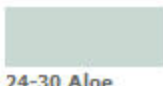
13-11 Golden Burma

**Everyday Indulgence**

Personal expression and the need to be part of an experience is defined in a luxurious and refined palette. The younger generation isn't impressed easily and has influenced the mainstreaming of luxury. Pampering and sensory stimulation for luxury is evident in the mass markets need for comfort through fabrics and finishes.



16-30 Catawba Grape



24-30 Aloe



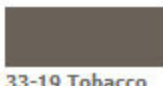
12-28 Riviera Sand



26-17 Midsummer Gale



33-32 Navajo



33-19 Tobacco



24-26 Boucle



32-14 Garnet

**Enchantment**

An airy and carefree, yet mysterious, palette conjures a feeling of the past. Victorian ladylike colors come together to form an enchanting palette of misty tones and sheer neutrals creating an almost fairytale like atmosphere, all while remaining gender neutral.



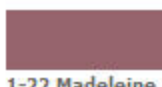
24-23 Always Smooth



2-31 Hare



27-22 Lovebird



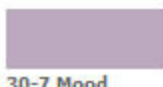
1-22 Madeleine



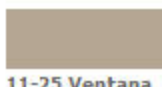
26-28 Kid Glove



27-14 Starless Night



30-7 Mood Violet



11-25 Ventana

**[Back to the 2007 Color Trends](#)**