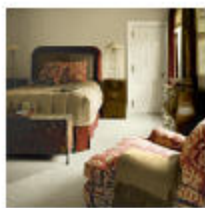


Color Trends

Comfort Zone

The Comfort Zone creates a comfortable environment for those who want to relax around furnishings that are not fussy. The overall elements are those that have indestructible yet rich looking materials. These colors are inspired by some of the mineral and vegetable-dyed colors, and by things that feel natural and yet with deep, earthy colors.



8-19 Burnt Almond



11-30 Lambswool



10-11 Brownd Butter



6-13 Faded Rose



16-18 Rockingham Green



5-29 Chrysalis



29-19 Monumental



32-16 Loam

[Top](#)

The World is Not Flat!

Color is an integral part of the perceptions of cultural influences from around the world. The richness of heritage is proudly displayed by the use of color, just as in the Olympics in Greece. Colors have a new depth of tone as well as meaning for those who want to experiment with color and cultural ideas.



25-16 Spanish Blue



3-13 Vintage Claret



14-28 Moselle



31-17 Black Orchid



15-21 Amber Green



10-9 Bay Rum



2-18 British Brown



7-21 Matté

[Top](#)

Simply Marvelous

Ahhhh, let's make our lives less complicated with a dual-function mentality. The trend is to get more from less. In our busy lives, we want to find ways to pare down and simplify, in order to enjoy life. Finishes and colors that are luxurious, durable, playful and sophisticated are ways to make the most of a home's décor and function.



27-11 Blue Milano



30-9 Plum Muscari



16-28 Split Pea



2-13 Cranberry



10-31 Meerschaum



6-13 Faded Rose



8-17 Walnut Bark

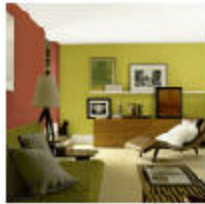


26-16 Blueberry

[Top](#)

Retro-Fitted

With a renewal of attitudes from the past come improvements with a modern way of thinking. The emotional connections to our past are rooted in happy, colorful times that connoted optimism for the future and respect for each other. The romanticism and glamour of the '50's, for example, exemplify the color palettes for today.



10-7 Golden Box



16-16 Kashmir Green



2-12 Taffy Lips



23-20 Eucalyptus Leaf



4-7 Haiku



1-2 Degas Pink



9-27 Pastry



25-10 Anchor's Aweigh